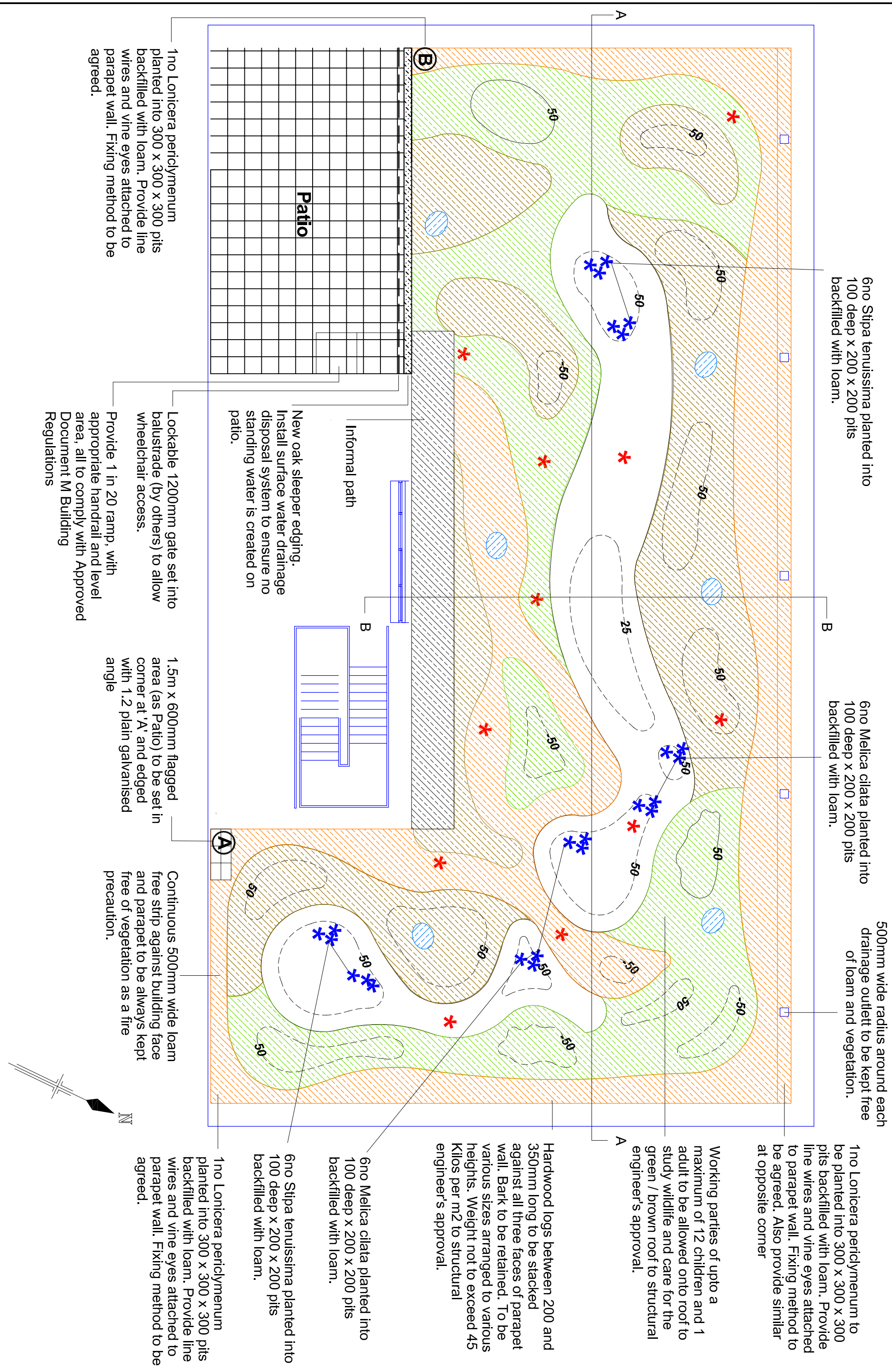
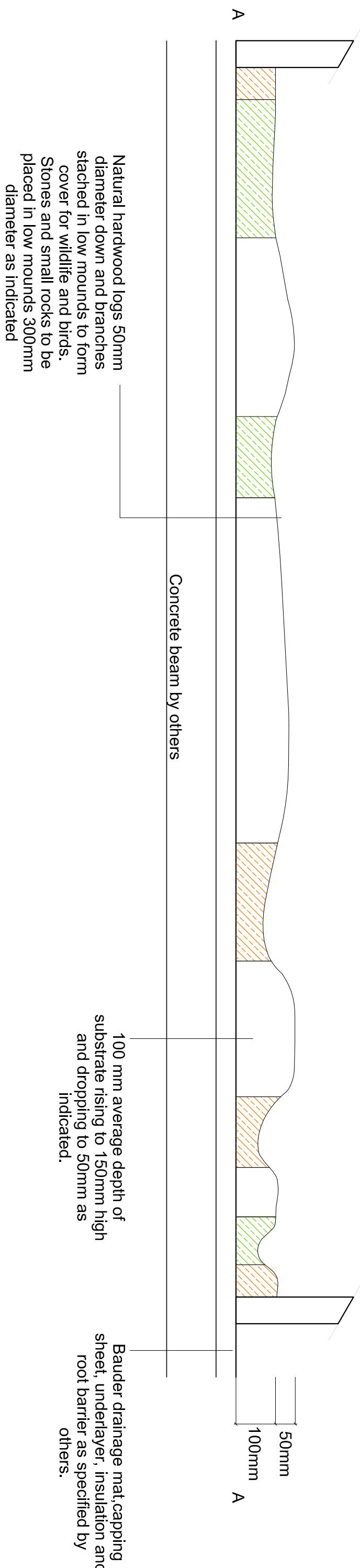


Plan View 1:100

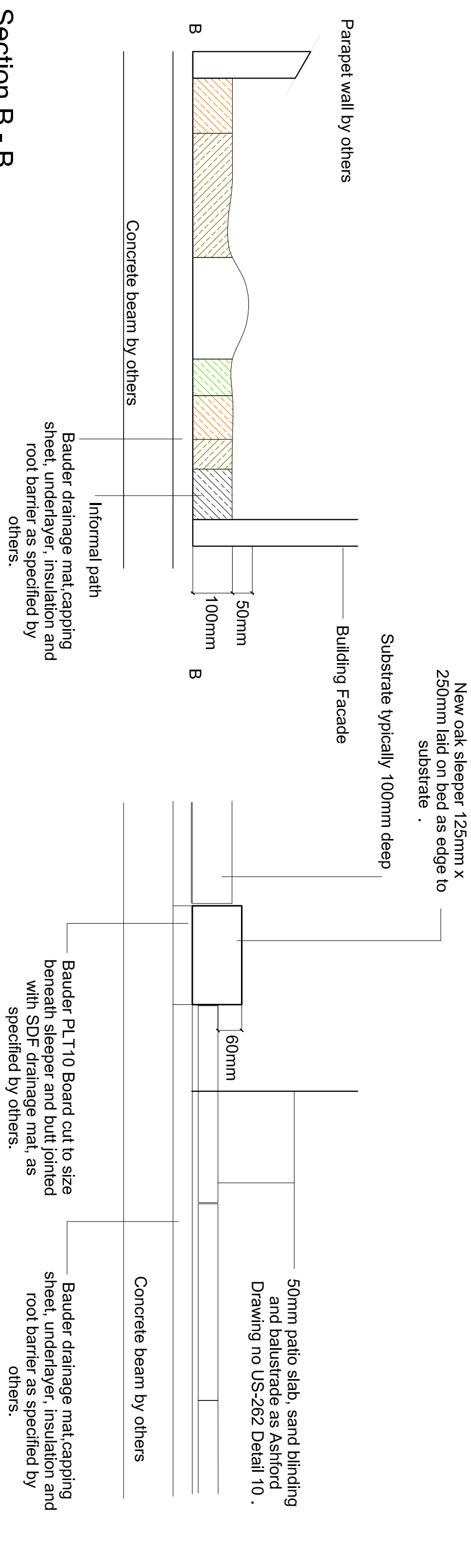


Section A - A

Horizontal Scale 1:100, Vertical Scale 1:10



Typical Section Detail 1: Scale 1:10
Sleeper / Patio Edging



Section B - B

Horizontal Scale 1:100, Vertical Scale 1:10

Seed Mixture 1 for Brown Roof

Mix Design %	Species for Brown Root Substrate	English Name	
5	<i>Agrimonia eupatoria</i>	Agrimony	
5	<i>Agrostemma githago</i>	Com cockle	
5	<i>Achillea vulneraria</i>	Kidney yetch	
5	<i>Centaurea cyanus</i>	Coriflower	
5	<i>Centaurea nigra</i>	Common knapweed	
3	<i>Daucus carota</i>	Wild carrot	
5	<i>Ethium vulgare</i>	Viper's-bugloss	
5	<i>Knautia arvensis</i>	Field scabious	
5	<i>Leonodon hispidus</i>	Rough hawkbit	
3	<i>Leucanthemum vulgare</i>	Oxeye daisy	
1	<i>Linaria vulgaris</i>	Common roadflax	
4	<i>Lotus corniculatus</i>	Birds foot trefoil	
2	<i>Origanum vulgare</i>	Wild marjoram	
2	<i>Papaver dubium</i>	Long-headed poppy	
4	<i>Papaver rhoeas</i>	Hoary plantain	
5	<i>Plantago media</i>	Hoary plantain	
5	<i>Prunella vulgaris</i>	Selfheal	
4	<i>Ranunculus bulbosa</i>	Bulbous buttercup	
5	<i>Reseda lutea</i>	Wild mignonette	
5	<i>Sanguisorba minor</i> ssp <i>minor</i>	Sadist burnet	
5	<i>Sedum acre</i>	Biting stoncrop	
5	<i>Silene vulgaris</i>	Bladder campion	
2	<i>Trifolium arvense</i>	Hair's foot clover	
1	<i>Verbasum thapsus</i>	Great mullein	
4	<i>Viola tricolor</i>	Wild pansy	
100			

Seed Mixture 2 for Green Roof

% for mix 2	Species for Green Roof substrate	English Name
6	<i>Achillea millefolium</i>	Yarrow
6	<i>Antennaria trincoria</i>	Yellow daisy
5	<i>Anthoxanthum odoratum</i>	Sweet Vernal Grass
7	<i>Briza media</i>	Quaking Grass
5	<i>Campanula rotundifolia</i>	Blue Harebell
6	<i>Dianthus deltoides</i>	Native Pink
10	<i>Festuca ovina</i>	Sheeps Fescue
5	<i>Geranium robertianum</i>	Herb Robert
5	<i>Limonium platyphllum</i>	Sea Lavender
5	<i>Plantago lanceolata</i>	Ribwort Plantain
5	<i>Sanguischa minor</i>	Salad Burnet
5	<i>Saxifraga troidactyles</i>	Rose Leaved Saxifrage
14	<i>Sedum ace</i>	Biting stonecrop
6	<i>Thymus pulegioides</i>	Large Thyme
5	<i>Thymus serpyllinus</i>	Breckland Thyme
5	<i>Verbascum nigrum</i>	Dark Mullein
100		
Also	Allow for planting in pits as directed	
12No	<i>Stipa tenuissima</i>	2L Pot Feather Grass
12No	<i>Melica ciliata</i>	2L Pot Eyaash Pearl Grass
4No	<i>Lonicera periclymenum</i>	2L Pot Honeysuckle





All seed to be certified as native and supplied by Emorsgate Wild Seeds:
Tel: 017553 829028 Limes Farm, Tiley All Saints, Kings Lynn,
Norfolk, PE34 4RT.



Seed mixture to be supplied in the proportions as listed in the specification. To be spread at 2 grams per m². Seed to be mixed with dried, non sharp, horticultural sand, colour to be approved before mixing. Divide root area into lots and allocate appropriate quantity of seed per lot before mixing with sand.

**Refer to drawings 1050 US -261 and 262 for details of
Bauder Drainage System**

Landscape Proposals Roof Plan

Key

- | | |
|---|---|
|  | Imported 60mm pebble mixture to be spread 100mm deep.
Not to be spread with wildflower seed mixture. |
|  | Imported graded pure crushed brick 70mm down to be spread 100mm deep unless indicated otherwise. Allow for spreading 10mm depth of sterilised loam over final surface.
To be spread with wildflower seed mixture 1. |
|  | Imported demolition aggregate comprising of 40mm to sand. To be spread 100mm deep unless indicated otherwise. Allow for spreading 10mm depth of sterilised loam over final surface.
To be spread with wildflower seed mixture 1. |
|  | Pure recycled sand (clay and silt extracted) to be placed in mounds up to 200mm high in areas indicated as agreed with structural engineer. |

- | | |
|---|---|
| <input type="checkbox"/> | Imported graded pure crushed brick 40mm to 5mm, laid to form 'green' roof substrate. Allow for spreading 40mm depth of sterilised loam over final surface. To be spread with wildflower seed mixture Z. |
|  | Imported graded demolition aggregate 20mm - sand, lightly compacted with a vibrating plate to be laid as an informal path. |
| <input type="checkbox"/> | Existing drainage outlet to remain. Do not spread loam within 500mm of drainage outlet. |
|  | Location for small hardwood logs 50mm diameter and branches grouped to form mound (as available). |

- *50** Additional material to be added to increase height (mm) of substrate mound, or scraped out, as indicated. Allow for spreading 10mm depth of sterilised loam over final surface of formed mounds.

- New oak, adding 125mm x 2500mm x 3000mm. Cut to length and secured at each butt joint with zinc 300mm x 25mm x 3mm galvanised straps position as indicated onto PLT10 board cut to width of sleeper and butt jointed with SDF Baulder drainage mat. See Ashford Dwg's 1050 US -261 / 262 for details. Sleepers to be secured with galvanised steel straps fitted to internal face of sleeper as required.

- * Location of pit planted container grown grasses.
Arrange in groups of 3 approximately 200mm apart.**


Note: General subsurface depth 100 mm rising to 150mm and dropping to 50mm as agreed with structural engineer.
All recycled aggregate available from Coleman and Company Ltd
Tel: 0121 783 2523.

Note: Composition of aggregate to be composed of a minimum 80% recycled brick. Contact Coleman to establish source of aggregate and confirm composition prior to delivery. A higher concrete content (more than 40%) will be rejected'

Roof drainage and root barrier system provided and specified by Astroids.

All structural advice to be provided by structural engineer. Do not concentrate stones or branches together: weight to be distributed evenly across the roof.

Allow for fixing (with appropriate screws and wall plugs) 1no. Black Red-start nesting box (to be provided by others) to building wall at approx. 2m high as instructed by supervising Officer.

[illegible]

MOORE
ENVIRONMENT

WEST MIDLANDS FIRE AND
RESCUE AUTHORITY

NEW HEADQUARTERS

Landscape Proposals

Green - Brown Roof Plan & Cross Sections

This drawing to be read with drawing No 1203/2

1203/1

purpose and project as defined on this drawing. Refer to the contract for full terms and conditions.